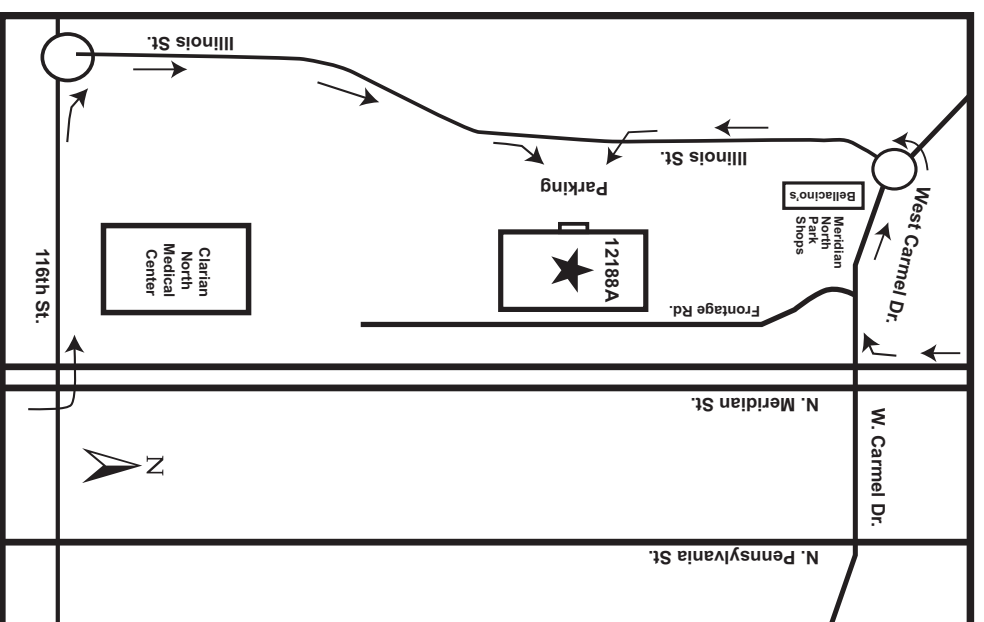
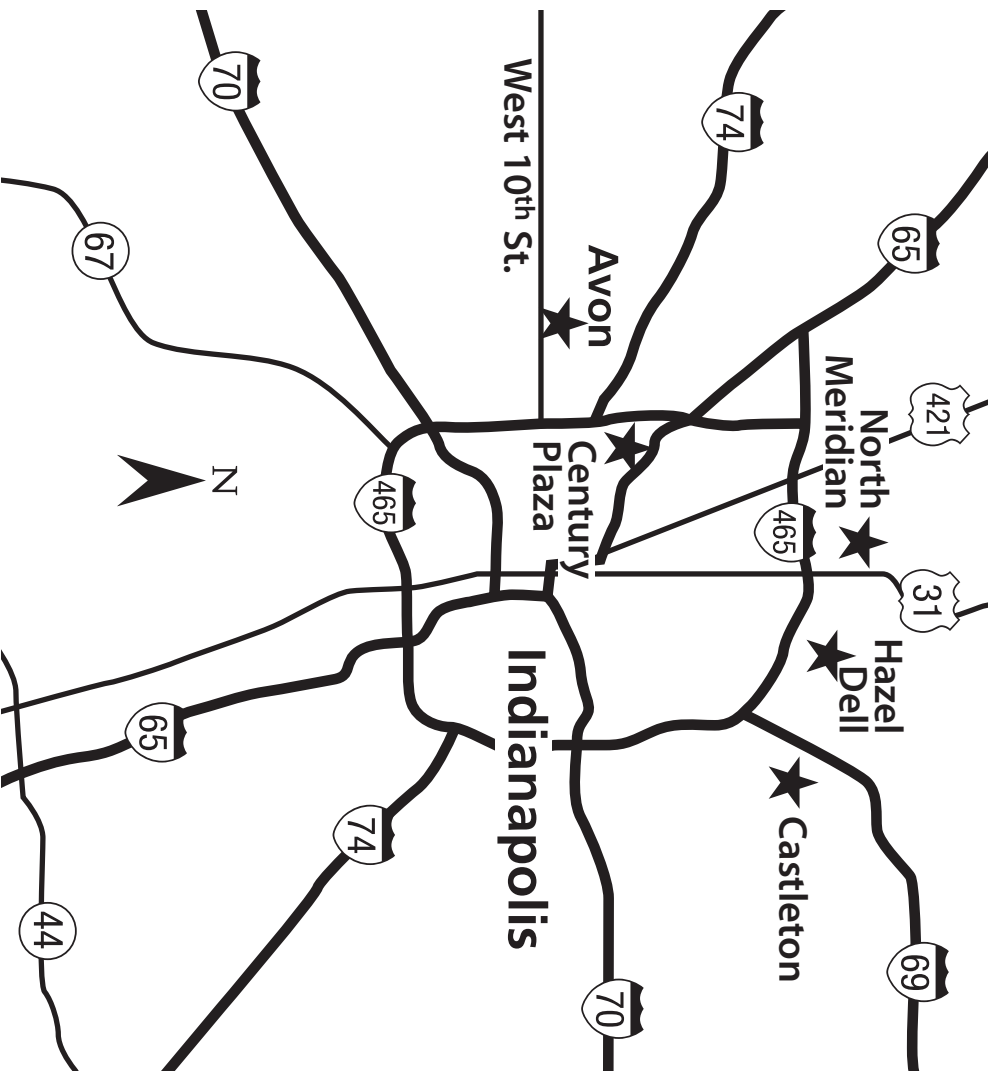




**317-926-1056**  
**800-283-1056 Toll Free**



**Carmel - Meridian St.**  
 12188A North Meridian Street, Suite 375  
 Carmel, IN 46032

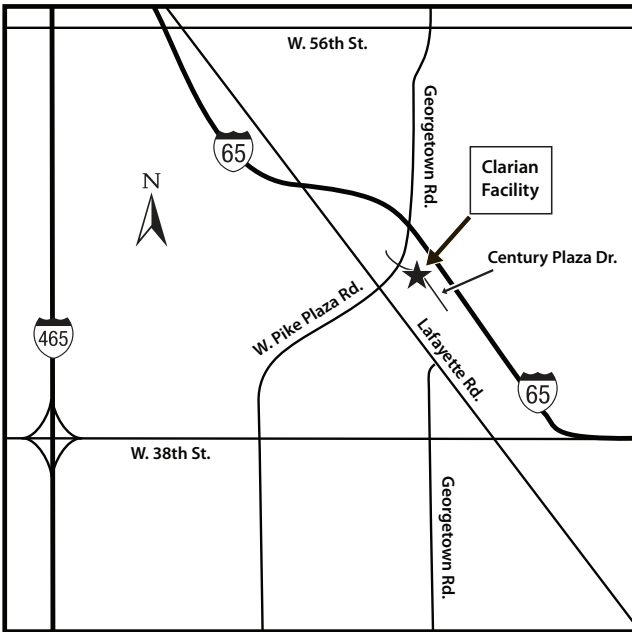
**Directions to Carmel Office**

**From North heading South...**

Turn right at West Carmel Drive, go to round-about, turn left. Travel South on Illinois to 12188A N. Meridian St. Entrance is on the left (East) side of the road.

**From South heading North...**

Turn left at 116th Street, go to round-about, turn right. Travel North on Illinois to 12188 A N. Meridian Street. Entrance is on the right (East) side of the road.



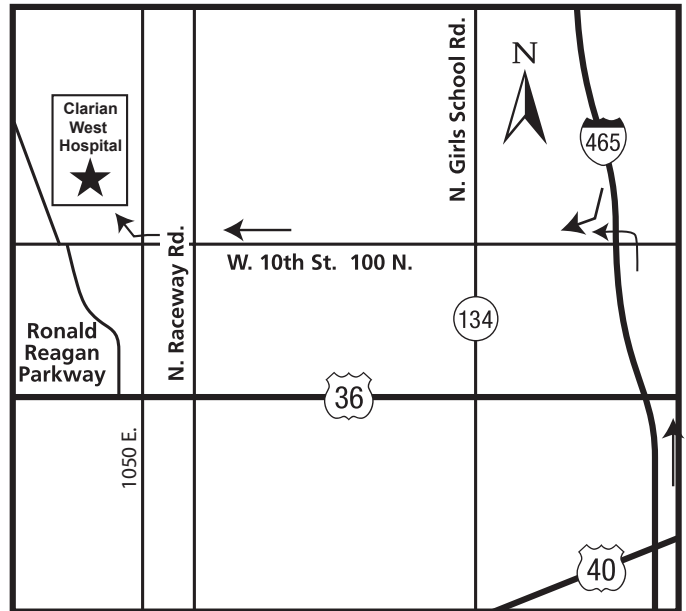
## Indianapolis - West

4880 Century Plaza Drive, Suite 170  
Indianapolis, IN 46254

### Directions to Century Plaza Office

#### From Interstate 65:

Take the Lafayette Rd. exit 121, Turn right on Lafayette Rd., Turn left on W. Pike Plaza Rd., Turn slight right onto Georgetown Rd., Turn right on Century Plaza Rd.



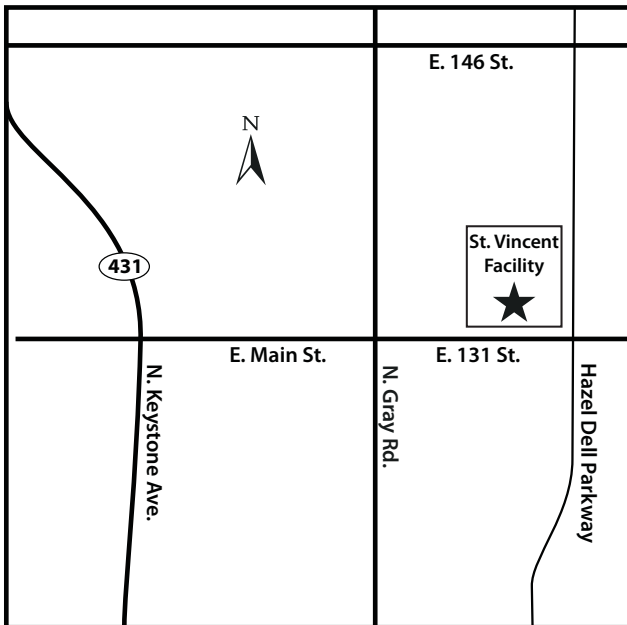
## Avon

1115 Ronald Reagan Parkway, Suite 254  
Professional Office Building - Clarian West Hospital  
Avon, IN 46123

### Directions to Avon Office

#### From Interstate 465 on the West side:

Take the West 10th Street exit. Head West on 10th Street approximately 3.5 miles, Clarian West's main entrance is on the right. Professional Center is on the northwest end of the Hospital. Entrance is on the right (East) side of the road.

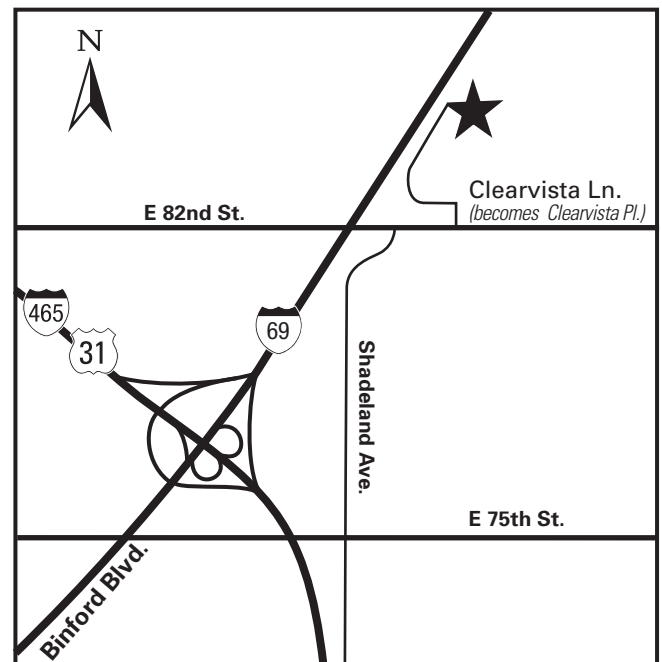


## Carmel - Hazel Dell Parkway

13250 Hazel Dell Pkwy, Suite 105  
Carmel, IN 46033

### Directions to Hazel Dell Office

From E. 146th St. turn south on Hazel Dell Pkwy.



## Castleton Office

8435 Clearvista Place, Suite #101  
Indianapolis, IN 46256